

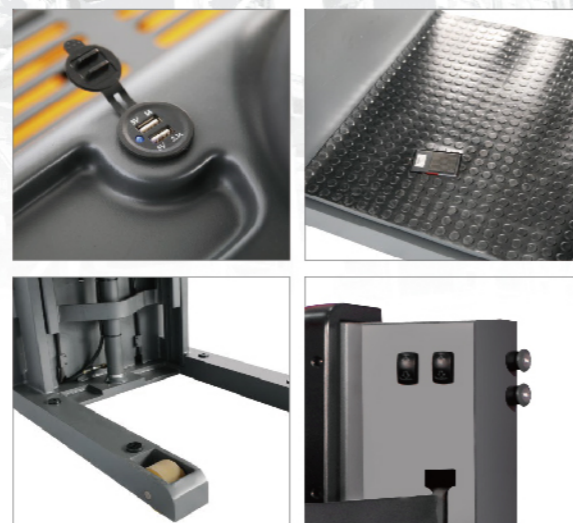
OPL10-S Electric Low Level Order Picker



AC / EPS

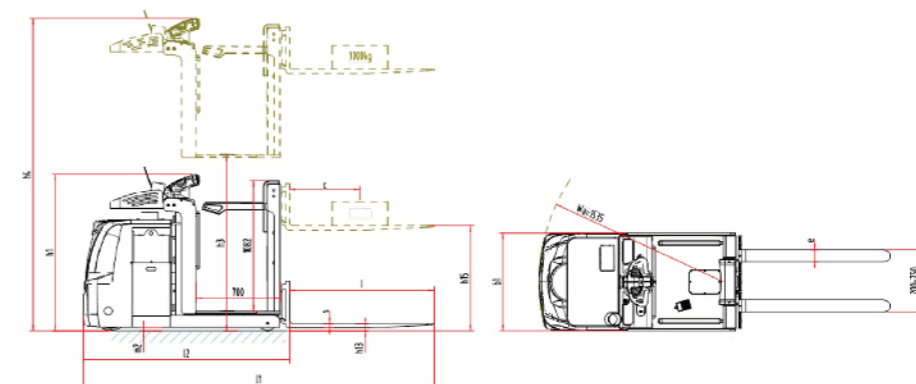
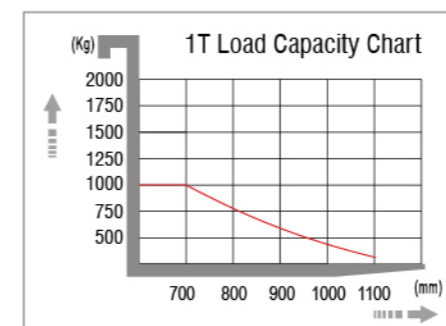
Characteristics

- Max.lifting height of platform is 1.2m, The capacity of loading tray is 60kg.
- Forward and backward control button located at the backrest of platform.
- Advanced electronic steering system (EPS) handle ensures effortless and highly efficient maneuverability.
- Combining of regenerative brake and electromagnetic brake provide safe and reliable brake.
- Side-way battery designs is very convenient for maintenance and replacement.
- USB charge device on the control panel which could charge phone, pad, et.
- Adopt AC drive control system.
- Small turning radius ensure the trucks can be used in narrow workplace.
- With reasonable layout of the key components, it is convenient to maintain.
- The back is equipped with guardrail protection device.



Manufacturer's Data and Technical Characteristics

Character			
1.01	Manufacturer		HELI
1.02	Model		OPL10-S
1.03	Drive mode		Electric (battery)
1.04	Driving mode		Stand-on
1.05	Load capacity	Q kg	1000
1.06	Load center distance	C mm	600
1.07	Track	Y mm	1300
Tyre			
2.01	Tyre type		Polyurethane
2.02	Wheels number,Front/rear(X=driven wheels)		1x/2
2.03	Track Width,rear	b11 mm	700
2.04	Wheel size, front		φ250×80
2.05	Wheel size, rear		φ128×73
Dimension			
3.01	Height, mast lowered	h1 mm	1300
3.02	Lift height of platform	h3 mm	1200
3.03	Height, mast extended	h4 mm	2360
3.04	Height, fork lift	h15 mm	800
3.05	Height, fork lowered	h13 mm	70
3.06	Overall length	l1 mm	2790
3.07	Length to shank of forks	l2 mm	1720
3.08	Overall width	b1 mm	812
3.09	Fork size	s/e/l mm	35×100×1070
3.10	Width across forks	b5 mm	200-750
3.11	Underground clearance at center of wheel base	m2 mm	35
3.12	Aisle width with pallet 1000x1200 (1200 refers to the pallet width across the fork)	Ast mm	3157
3.13	Aisle width with pallet 800x1200 (800 refers to the pallet width along the fork)	Ast mm	3178
3.14	Turning radius	Wa mm	1535
Performance			
4.01	Travelling speed,laden/unladen	km/h	7.7/7.8
4.02	Lifting speed,laden/unladen	m/s	0.1/0.15
4.03	Lowering speed,laden/unladen	m/s	0.08/0.07
4.04	Gradeability,laden/unladen	%	8/15
Electrical configuration			
5.01	Drive moter power	kw	1.5
5.02	Lifting moter power	kw	2.2
5.04	Battery capacity	V/Ah	24/450
5.05	Battery dimensions l/w/h	mm	654x305x705
5.06	Controller		CURTIS
5.07	Brake		Electromagnetic brake
Weight			
6.01	Total weight(with battery)	kg	1650
6.02	Axle load, front/rear axle, laden	kg	944/706
6.03	Axle load, front/rear axle, unladen	kg	500/2150



ANHUI HELI CO., LTD.

Add / No.668, FangXing Road, Hefei, China
Fax / +86-551-63639966

Tel / +86-551-63639068(America); 63639258(Europe);
63639358(Asia); 63662105(Africa & Middle East);
63639530(Key Accounts Division); 63662105(Wheel loader)